

# Essence Home

Nursing home for disabled people in Rivne, Ukraine



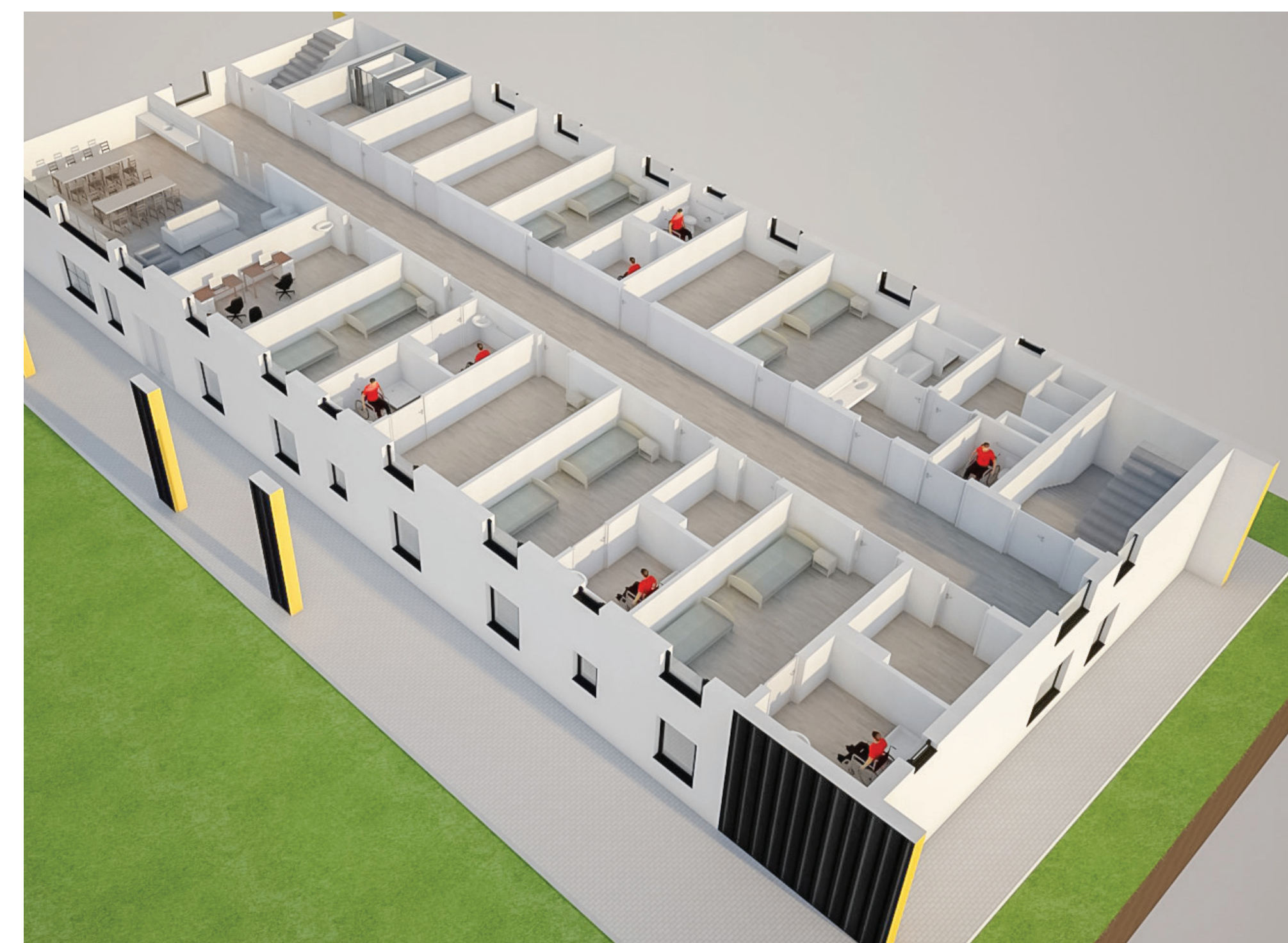
The aim of the project is to build necessary, innovative and clever living space for people with disabilities in Ukraine with the possibility of scaling up.

Since the beginning of the full-scale invasion, **503 people** from psycho- neurological institutions in the frontline and occupied areas were sheltered in the Rivne region. They cannot leave the country and seek help outside.



## New Reality for Ukraine

- ➔ more than 2.7 million disabled people in Ukraine (OHCHR);
- ➔ increasing number of people with disabilities as a war result;
- ➔ bomb shelter as a necessity, not a choice;
- ➔ according to the Ukrainian new law;
- ➔ sustainability, energy efficiency;
- ➔ more energy independence.



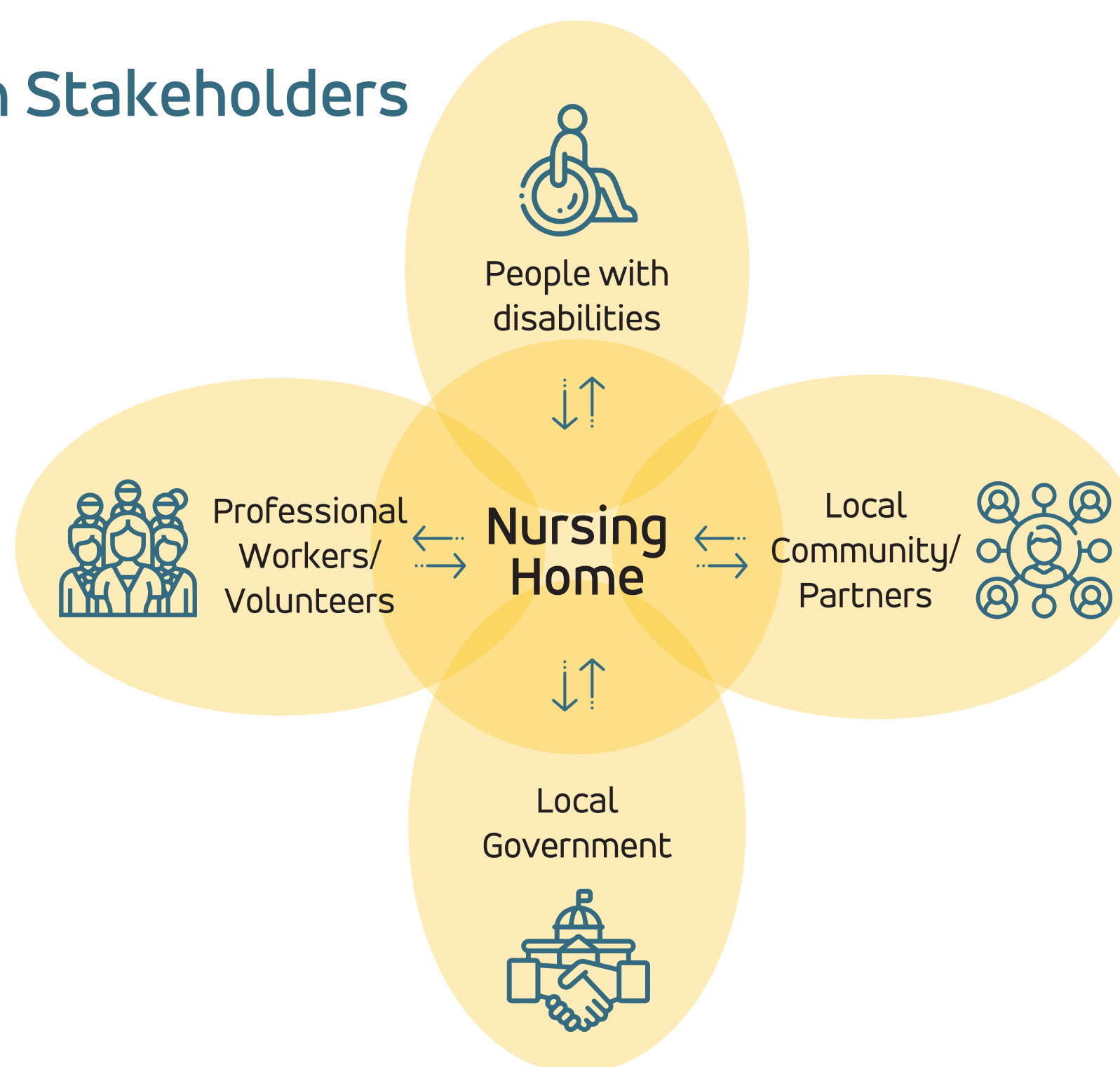
## Project Objectives

- ➔ Build more living space and to bring innovation with better practice to the living conditions of displaced persons with disabilities in Rivne region;
- ➔ Provide consistent, unconditional treatment and conditions for development, care and worthwhile essence by learning best practices from Switzerland.

## Expected Outcomes

- ➔ Develop a new concept of sustainable living space for people with disabilities;
- ➔ Identify and secure donors/investors for the construction and implementation of sustainability measures (green energy technology, heating and sanitation);
- ➔ Develop a strong network of supporters and partners to ensure the long-term success of the project;
- ➔ Provide a replicable model for other regions of Ukraine to follow in improving the living conditions and support for people with disabilities.

## Main Stakeholders



## Reached Milestones

- ☑ Establish contact with a counterpart in Ukraine: Rivne Nursing Home Director, Regional Council and Regional Office Administration.
- ☑ Research and collect data by observing, interviewing and visiting similar facilities.
- ☑ Develop step-by-step action plan, including legal documentation.
- ☑ Create a building design that incorporates energy-saving technology and user-friendly infrastructure
- ☑ Integrate social programmes that have been successfully implemented in Switzerland (various forms of therapy).

## Project challenges with limited building area

- ➔ Building area: 2110 m<sup>2</sup>
- ➔ Expected number of beds: 34
- ➔ Semi-private bedrooms with bathrooms: 17
- ➔ Bomb shelter: for 102 people
- ➔ Stretcher lift: 2
- ➔ Physiotherapy, manipulation, procedure rooms.
- ➔ Rest and dining areas
- ➔ Heating station and control room
- ➔ Premises for staff
- ➔ Concert hall for special events and active lessons



## Project Team

- ➔ Anastasiia Biliaieva  
anastasiia.biliaieva@students.bfh.ch
- ➔ Eugenia Bayer  
eugenia.bayer@students.bfh.ch
- ➔ Natalia Hradanovych  
natalia.hradanovych@students.bfh.ch
- ➔ Igor Krasovskiy
- ➔ Veronika Dudak

We thank to the State Secretariat for Economic Affairs SECO for supporting CAS Rebuild Ukraine Program.

The Project Team would like to express their gratitude for the sponsorship that enabled their participation in the CAS Rebuild Ukraine provided by Cadwork Holz AG / cadwork SA Semsales, Kantonale St.Gallische Winkelriedstiftung, Kuratle Group Management AG, Swissframe AG.

## More about

CAS Rebuild Ukraine

